

GENERAL DIRECTIONS

THE STRUCTURE HAS BEEN CALCULATED USING COMPUTER PROGRAM "MITEK PAMIR", Trustek OÜ_EE3 - LICENSE: 15049
 DESIGN CODE: EN 1995-1-1:2004 + A2:2014 + EE NA:2007 + A1:2008 + EE NA:2009
 FULL DESIGN RESULTS AS PER CALC. PRINTOUT

GENERAL SETTINGS

TIMBER THICKNESS (mm): 45
 TRUSS WEIGHT (kg/ply): 99
 TRUSS CENTRES (mm): 900
 LOAD SHARING FACTOR: 1.1
 SERVICE CLASS: 2 = 65% <= RH < 85%
 THE TRUSS PLANT IS CONTROLLED BY : NCS Estonia OÜ
 PRODUCT CERTIFICATE: 2866 - CPR - 2866-CPR-0017
 BRACING: SEE TIMBER TABLE

LOADS (N/m²)

SNOW ZONE: 1.5
 SNOW LOAD (Sk): 1500 N/m²
 WIND LOAD (qp(z)): 604 N/m²
 LIVE LOAD ON BOTTOM CHORD: 500
 DEAD LOAD ON WALL: 150
 DEAD LOAD ON ROOF: 650
 DEAD LOAD ON OVERHANG UNDERSIDE: 150
 DEAD LOAD ON CEILING: 450
 DEAD LOAD ON CEILING EXPOSED: 300
 SELF-WEIGHT ADDED

SUPPORT REACTIONS (N) (ULTIMATE)

JOINT no	DIR.	LC P/L MAX	LC M MAX	LC S MAX	LC I MAX	LC I MIN	S-W mm
10	HOR.	0	0	-1817	0	-	
10	VER.	8269	18444	19003	0	0	102
16	VER.	8269	18444	19003	0	0	102

MAX DEFLECTION (mm) (SERVICEABILITY)

JOINT no	VER.	HOR.	LC NO.
s3-12	9.3	0.9	1002:6 (Wfin (frequent))
s4-14	9.3	1.7	1002:6 (Wfin (frequent))
s2	1.1	3	1002:6 (Wfin (frequent))

FOR DEFLECTIONS AT OTHER POINTS - SEE CALC. PRINTOUT

TIMBER THICKNESS 45 mm				
JOINT FR-TO	DEPTH mm	GRADE	BRACING mm/no.	CSI %
1-s1	195	C24	350	37
5-s1	120	C24	350	62
5-s2	120	C24	350	62
4-6	120	C24	0	75
9-s2	195	C24	350	37
10-16	95	C24	Sheeting	
2-10	195	C24	None	18
8-16	195	C24	None	18
2-11	70	C24	None	69
3-11	95	C24	None	29
3-12	70	C24	None	8
4-12	70	C24	None	10
4-13	70	C24	None	20
6-13	70	C24	None	20
6-14	70	C24	None	15
7-14	70	C24	None	8
7-15	95	C24	None	29
8-15	70	C24	None	69

FASTENERS - SPLICES EXCL				
JOINT no	PLATE TYPE	WIDTH mm	LENGTH mm	CSI %
2	MiTopW	144	200	99
3	MiTopW	84	200	56
4	MiTopW	120	200	93
5	MiTopW	84	200	59
6	MiTopW	120	200	93
7	MiTopW	84	200	56
8	MiTopW	144	200	99
10	MiTopW	96	100	93
11	MiTopW	96	200	78
12	MiTopW	84	200	51
13	MiTopW	84	200	45
14	MiTopW	84	200	51
15	MiTopW	96	200	78
16	MiTopW	96	100	93

FASTENER LOCATION TOLERANCE: 8 mm

FASTENERS - SPLICES				
JOINT no	PLATE TYPE	WIDTH mm	LENGTH mm	CSI %
s1	MiTopW	84	200	88
s2	MiTopW	84	200	88
s3	MiTopW	84	200	60
s4	MiTopW	84	200	60

© The drawing is protected under copyright law and may not be copied, distributed or otherwise used without the author's consent.

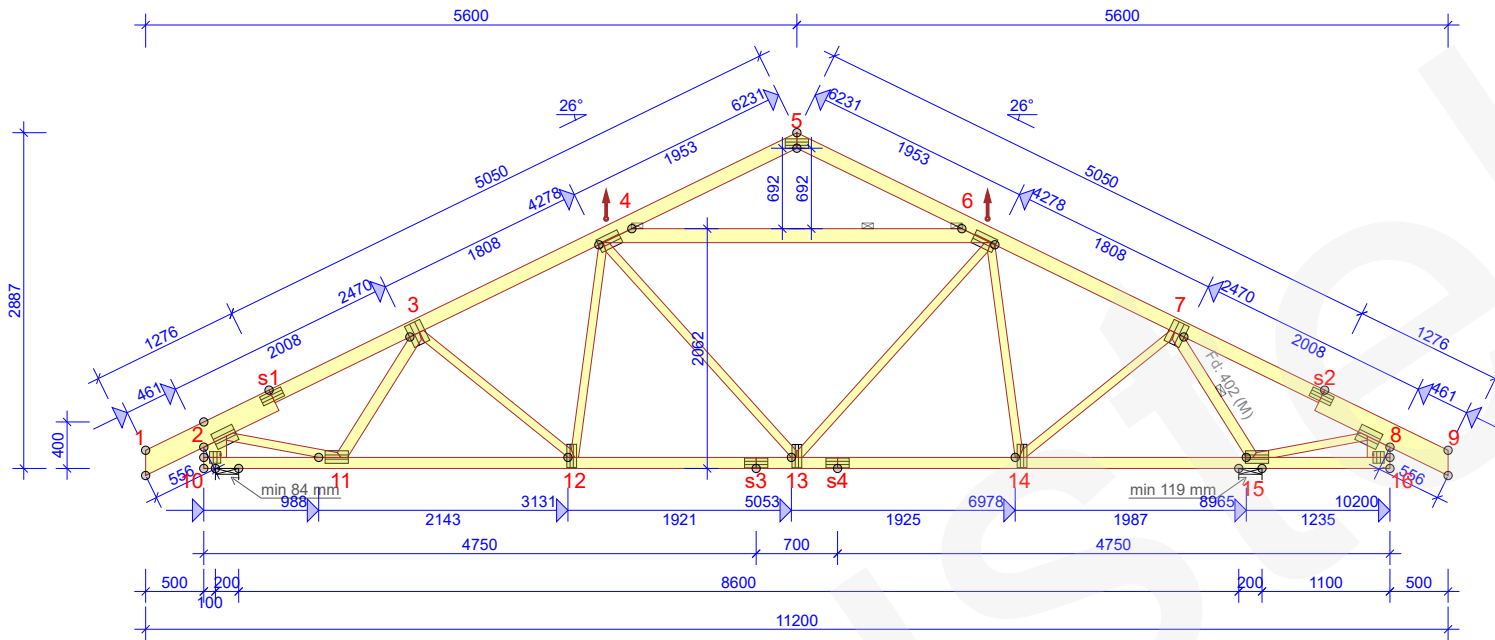
Designer: J.S.
 Supervisor:
 Main engineer:
 Cert. no:

Customer:	Project no:
Project name:	Mark:
Project address:	Revision:
Page name:	Page no:
Date:	Scale:
Page no:	Date:

091023TTC
 T1
 1/1
 1:65
 06/06/2023

T3 - 10 no.

BRACINGS ACCORDING TO TIMBER TABLE AND STABILITY OF THE TRUSS SYSTEM SHALL BE DESIGNED SEPARATELY
 LONGITUDINAL BRACES MUST BE INSTALLED PRIOR TO STANDING ON HORIZONTAL TOP CHORDS
 ☒ INDICATES BRACING



GENERAL DIRECTIONS

THE STRUCTURE HAS BEEN CALCULATED USING
 COMPUTER PROGRAM "MITEK PAMIR",
 Trustek OÜ_EE3 - LICENSE: 15049
 DESIGN CODE: EN 1995-1-1:2004 + A2:2014 + EE NA:2007 +
 A1:2008 + EE NA:2009
 FULL DESIGN RESULTS AS PER CALC. PRINTOUT

GENERAL SETTINGS

TIMBER THICKNESS (mm): 45
 TRUSS WEIGHT (kg/ply): 100
 TRUSS CENTRES (mm): 900
 LOAD SHARING FACTOR: 1.1
 SERVICE CLASS: 2 = 65% <= RH < 85%
 THE TRUSS PLANT IS CONTROLLED BY :
 NCS Estonia OÜ
 PRODUCT CERTIFICATE: 2866 - CPR - 2866-CPR-0017
 BRACING: SEE TIMBER TABLE

LOADS (N/m²)

SNOW ZONE: 1.5
 SNOW LOAD (Sk): 1500 N/m²
 WIND LOAD (qp(z)): 604 N/m²
 LIVE LOAD ON BOTTOM CHORD: 500
 DEAD LOAD ON WALL: 150
 DEAD LOAD ON ROOF: 650
 DEAD LOAD ON OVERHANG UNDERSIDE: 150
 DEAD LOAD ON CEILING: 450
 DEAD LOAD ON CEILING EXPOSED: 300
 SELF-WEIGHT ADDED

SUPPORT REACTIONS (N) (ULTIMATE)

JOINT no	DIR.	LC P/L MAX	LC M MAX	LC S MAX	LC I MAX	LC I MIN	S-W mm
10	HOR.	0	0	-1817	0	-	
10	VER.	7330	16348	16843	0	0	84
15	VER.	9027	20378	21097	0	0	119

MAX DEFLECTION (mm) (SERVICEABILITY)

JOINT no	VER.	HOR.	LC NO.
11-12	7.4	0.3	1002:6 (Wfin (frequent))
s3-12	6.6	0.7	1002:6 (Wfin (frequent))
9	-0.1	2.3	1002:1 (Winst)

FOR DEFLECTIONS AT OTHER POINTS - SEE CALC. PRINTOUT

TIMBER THICKNESS 45 mm				
JOINT FR-TO	DEPTH mm	GRADE	BRACING mm/no.	CSI %
1-s1	195	C24	350	33
5-s1	120	C24	350	54
5-s2	120	C24	350	71
4-6	120	C24	1983	100
9-s2	195	C24	350	24
10-16	95	C24	Sheeting	
2-10	195	C24	None	15
8-16	195	C24	None	18
2-11	70	C24	None	60
3-11	95	C24	None	25
3-12	70	C24	None	14
4-12	70	C24	None	15
4-13	70	C24	None	62
6-13	70	C24	None	17
6-14	70	C24	None	48
7-14	70	C24	None	40
7-15	95	C24	1	60
8-15	70	C24	None	50

FASTENERS - SPLICES EXCL				
JOINT no	PLATE TYPE	WIDTH mm	LENGTH mm	CSI %
2	MiTopW	144	200	94
3	MiTopW	144	200	22
4	MiTopW	120	200	67
5	MiTopW	84	200	57
6	MiTopW	120	200	70
7	MiTopW	144	200	98
8	MiTopW	144	200	51
10	MiTopW	96	100	83
11	MiTopW	108	200	69
12	MiTopW	84	200	56
13	MiTopW	84	200	59
14	MiTopW	84	200	67
15	MiTopW	108	200	97
16	MiTopW	96	100	66

FASTENER LOCATION TOLERANCE: 8 mm

FASTENERS - SPLICES				
JOINT no	PLATE TYPE	WIDTH mm	LENGTH mm	CSI %
s1	MiTopW	84	200	76
s2	MiTopW	84	200	43
s3	MiTopW	84	200	51
s4	MiTopW	84	200	39

© The drawing is protected under copyright law and may not be copied, distributed or otherwise used without the author's consent.

Designer: J.S.
 Supervisor:
 Main engineer:
 Cert. no:

Customer:	Project no: 091023TTC
Project name:	Mark: T3
Project address:	Revision:
Page name:	Page no: 1/1
	Scale: 1:65
Date: 06/06/2023	Page no:

06/06/2023 - 14:23
 2023.1c (3ef9445)