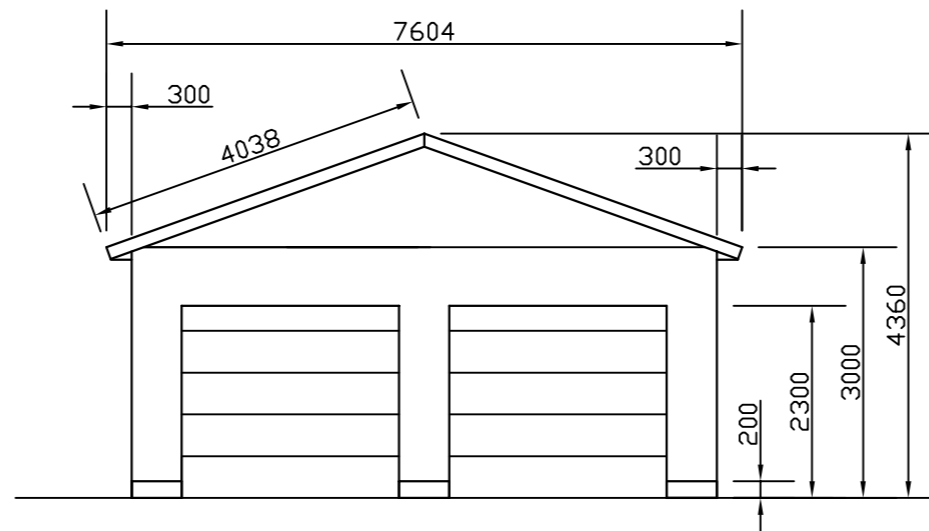
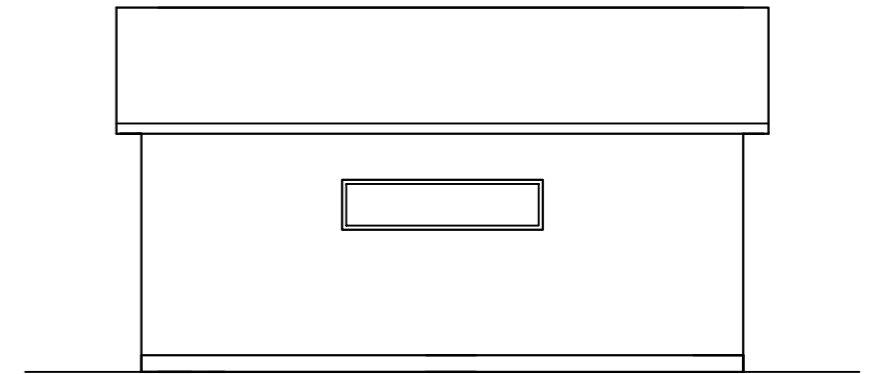


*Vaade vasakult*

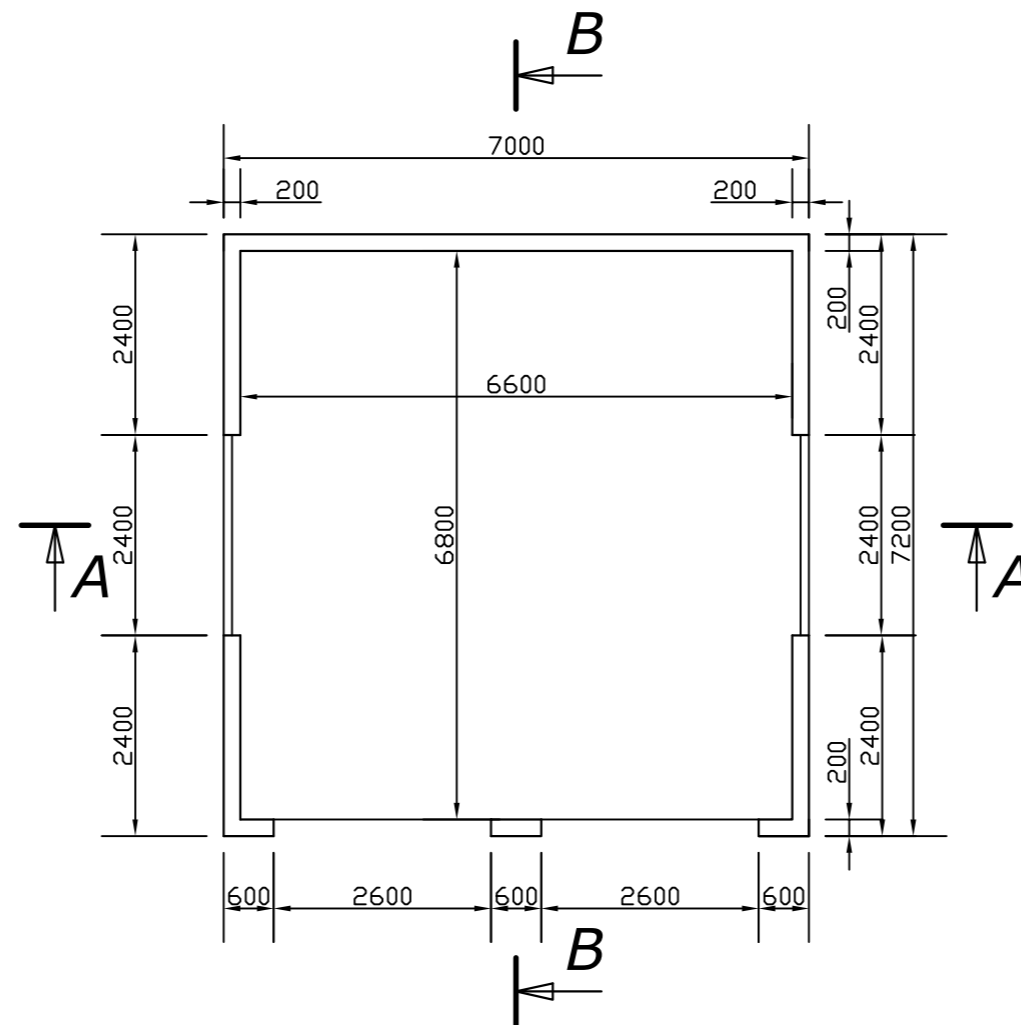
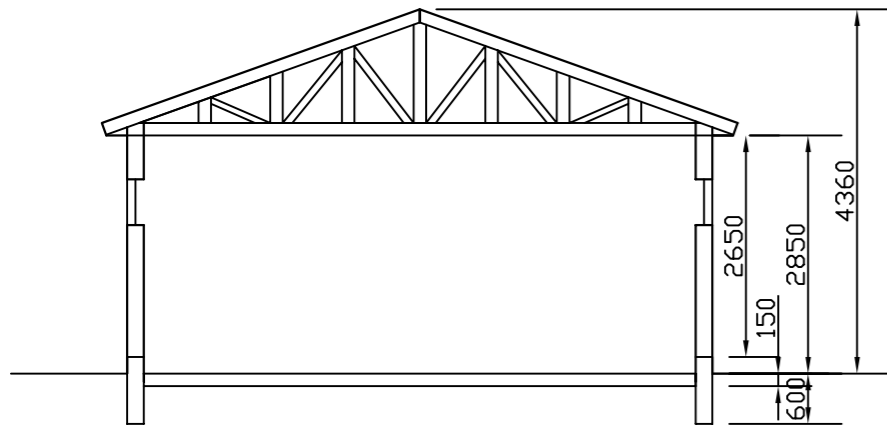


*Vaade eest*

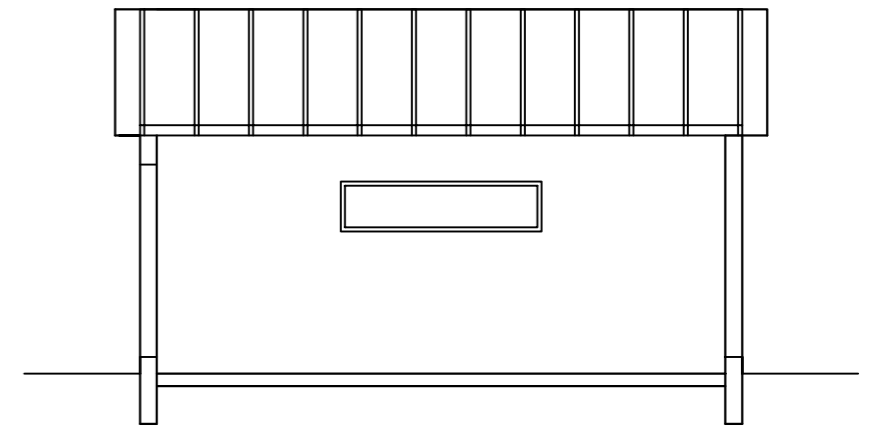


*Vaade paremalt*

Lõige A - A



Lõige B - B



- Vundament - FIBO vundamendiplokk
- Põrand - armeeritud valubeton 15cm, 10cm vahtpolüsterool alusel
- Välisseinad - AEROC Classic 200 või valgeks värvitud FIBO plokk
- Katus - kiviprofiliga terasplekk, toon RR32
- Garaaziuksed - ülesavanev moodulüks koos elektriajamiga, toon RR32
- Küte - õhksoojuspump + elekter
- Elektrivarustus - Tööstusvool 16A