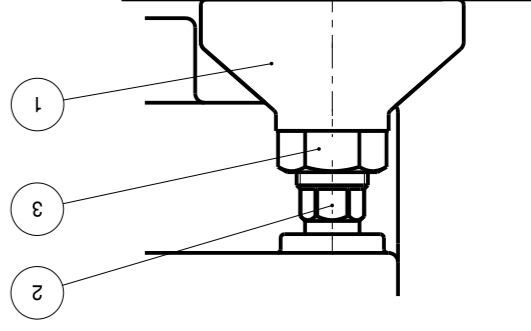


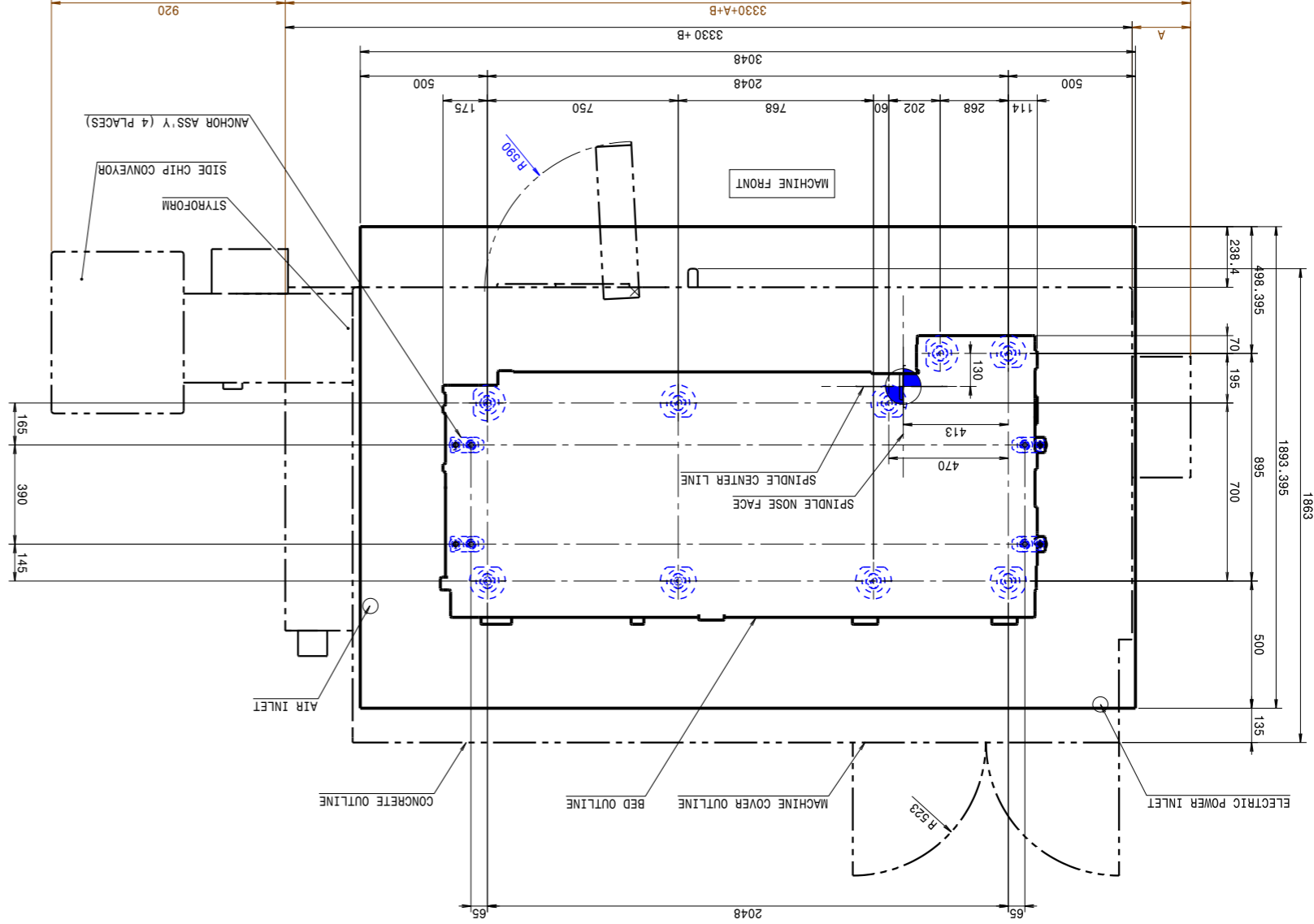
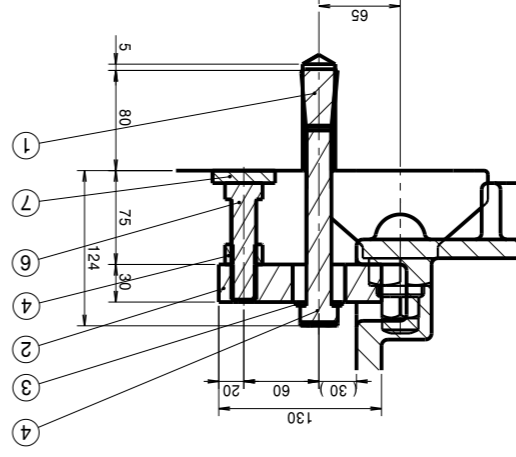
No.	PART NO.	PART NAME	Qty.
1	L62312013A	LEVEL BLOCK	9
2	L62312023A	LEVEL BOLT	9
3	L62312033A	NUT	9

LEVEL BLOCK UNIT(L62310507A)



No.	PART NO.	PART NAME	Qty.	SPEC.	REMARK
1	120104-00007	FOUNDATION BOLT	4	M20(W3/4)	
2	910902-00030	BLOCK	4		
3	S5001101	PLAIN WASHER	4	ZP20	
4	S0071552	BOLT, HEX HEAD	4	M20X140	
5	S4001132	HEX. NUT	4	NA20	
6	S0028252	HEX. HEAD BOLT	4	BS20X80	
7	Z50205-00270	ANCHOR PLATE	4	∅50X110	

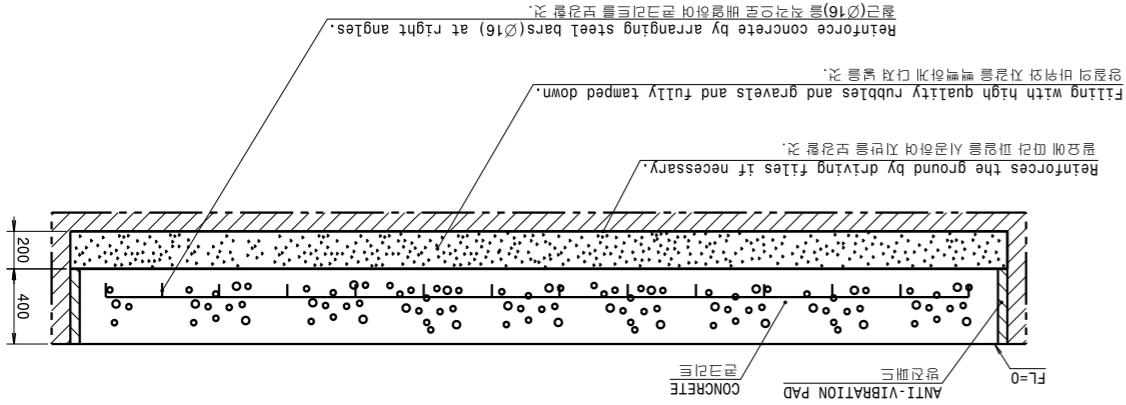
ANCHOR ASS'Y (120401-00020)



PUMA2100L/PUMA2100LS/PUMA2100LM/PUMA2100LSY/PUMA2100LY/PUMA2100LMS/PUMA2100LMS/PUMA2100LY/PUMA2100LY/PUMA2100LSY/P2600/P2600S/P2600M/P2600MS/P2600Y/P2600SY

REMARKS  
 1. WIRING FROM POWER SOURCE TO THE MACHINE MUST BE PERFORMED BY CUSTOMER.  
 2. CURING PERIOD OF CONCRETE SHOULD BE MORE THAN ONE MONTH.  
 3. THE FOUNDATION VALUES SHOWN IN THIS DRAWING ARE REFERENCE/RECOMMENDED VALUES.  
 IF THE SOIL CONDITION IS POOR, VERIFICATION IS NEEDED THROUGH THE STRUCTURAL DESIGNER.  
 추가

1. 기계까지의 전원배선 작업은 사용자측에서 준비하여 작업할 것.  
 2. 콘크리트의 양생기간은 1개월 이상으로 할 것.  
 3. 도면에 표기된 값은 추천치입니다. 만약 지반의 경우에는 구조 설계자를 통한 검증이 필요합니다.



MODEL	MOTOR	LENGTH 'A' (mm)
PUMA 2600B	ALPHA P40	333
PUMA 2600B	ALPHA P30	385
PUMA 2600B	ALPHA P40	510
PUMA 2600B	ALPHA P30	550

MODEL	MOTOR	LENGTH 'A' (mm)
PUMA 2100L	ALPHA P15	160
PUMA 2100L	ALPHA P22	230
PUMA 2100L	ALPHA P30	335
PUMA 2100L	ALPHA P18	230
PUMA 2600	ALPHA P30	385
PUMA 2600	ALPHA P40	385

TOLERANCE(허용 공차)	
PLATES(판면도)	±5mm
PITCH OF HOLES (구멍 간격)	±10mm
ACCUMULATED(누적)	±20mm
DIMENSIONS OF HOLES (구멍 크기)	
CONCRETE(콘크리트)	STRENGTH(강도) 240 kg/cm <sup>2</sup>
QUANTITY(수량)	2.18 m <sup>3</sup> (5.24 ton)

MAIN VALUES(주요 수치)	
MACHINE WEIGHT (기계 중량)	P2100L 5350 kg
MACHINE WEIGHT (기계 중량)	P2100LS 5800 kg
MACHINE WEIGHT (기계 중량)	P2100LM 5500 kg
MACHINE WEIGHT (기계 중량)	P2100LMS/LY 5950 kg
MACHINE WEIGHT (기계 중량)	P2100LSY 6400 kg
MAX. WORKPIECE WEIGHT (최대 공작물 중량)	300 kg
BEARING OF SOIL (지반)	2.5 ton/m <sup>2</sup>
MACHINE WEIGHT (기계 중량)	P2600 5400 kg
MACHINE WEIGHT (기계 중량)	P2600S 5850 kg
MACHINE WEIGHT (기계 중량)	P2600M 5550 kg
MACHINE WEIGHT (기계 중량)	P2600MS/Y 6000 kg
MACHINE WEIGHT (기계 중량)	P2600SY 6450 kg
MAX. WORKPIECE WEIGHT (최대 공작물 중량)	520 kg
BEARING OF SOIL (지반)	2.5 ton/m <sup>2</sup>

SUFFIX	MARK	SUBJECT	ECON. NO.	DATE	NAME	CHECKED
X						
X						
X						

DATE	NAME	CHECKED
2000-12-01	DESIGNED	
2000-12-01	CHECKED	
2000-12-01	APPROVED	

REF. DRG. NO.	DRG. NO.	DRG. NAME
P2100L/P2600	A1	FOUNDATION PLAN

SCALE	SCALE
1/15	1/15

WT (kg)	WT (kg)

