

| Gabariitmõõdud, mm | | | Arvestuslik maht | Mass | Tähtaeg | Valmistatakse | Elemendi tüüp | Elemendi tähis |
|--------------------|---|---|--------------------|------|---------|---------------|--------------------|----------------|
| B | L | H | | | | | terrassi vundament | |
| | | | 3,1 m ³ | t | | tk | | |

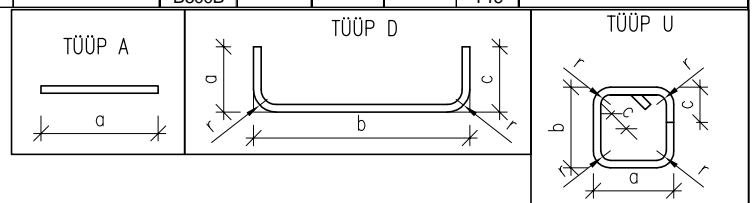
SARRUSE PAINUTUSTABEL

TOODUD PAINUTUSMÕÕDUD ON VARDA VÄLISPINNA

| Tüüp | Pos. | Terase klass | Arv | Ø, mm | Lõikepikkus, mm | Painutusmõõdud | | | | | | | | | | |
|------|------|--------------|-----|-------|-----------------|----------------|-----|-----|---|---|---|---|----|---|----|--|
| | | | | | | a | b | c | d | e | f | v | u' | r | D | |
| A | 1 | B500B | 12 | 12 | 119 | jm | | | | | | | | | | |
| D | 1 | B500B | 8 | 8 | 838 | 250 | 378 | 250 | | | | | | | 24 | |
| U | 1 | B500B | 152 | 6 | 1160 | 390 | 120 | 100 | | | | | | | 18 | |
| U | 2 | B500B | 6 | 6 | 1160 | 390 | 120 | 100 | | | | | | | 18 | |

MATERJALID JA TOOTED

| Pos. | Kood | Nimetus | Mõõt | Klass | Kogus kokku, | | | Märkus |
|------|------|-------------------|------|--------|--------------|----------------|-----|-------------------|
| | | | | | tk | m ³ | jm | |
| | | Betoon | | C30/37 | | 3,1 | | EVS-EN 206-1 |
| | | Sarruseteras | Ø6 | B500B | | | 43 | EVS-EN 10080:2005 |
| | | Sarruseteras | Ø12 | B500B | | | 106 | EVS-EN 10080:2005 |
| | | Kogu sarruseteras | | B500B | | | 149 | |



MÄRKUSED:

- Raudbetoonelementide vastavuskontroll ja tootmisjuhised vastavalt standardile EVS-ENV 13670-1:2003 ja EVS 1992-1-1;
- Välistrepi plaan vt. joon. EK 005;
- Vundament valada betoonist C30/37, standard EVS-EN 206-1, sarrus B500B, standard EVS-EN 10080:2005;
- Betooni keskkonaklass XC4/XF2;
- Sarruse kaitsekiht - 40mm.