

2.22

2.64



Soojuspump
Mitsubishi Heavy SRK20ZS/SRC20ZSX-S

Köök

Tuba

4.54

4.54

2.37

2.1

4.92

4.54
6.35

2.22

4.98

0.52

9.32

1.19

2.4

1.19

Esik

2.4

9.32

0.8

Tuba

4.78

0.49

1.26

4.77

4.78

3.26

3.26

Vannituba

2.38

3.73

1.19

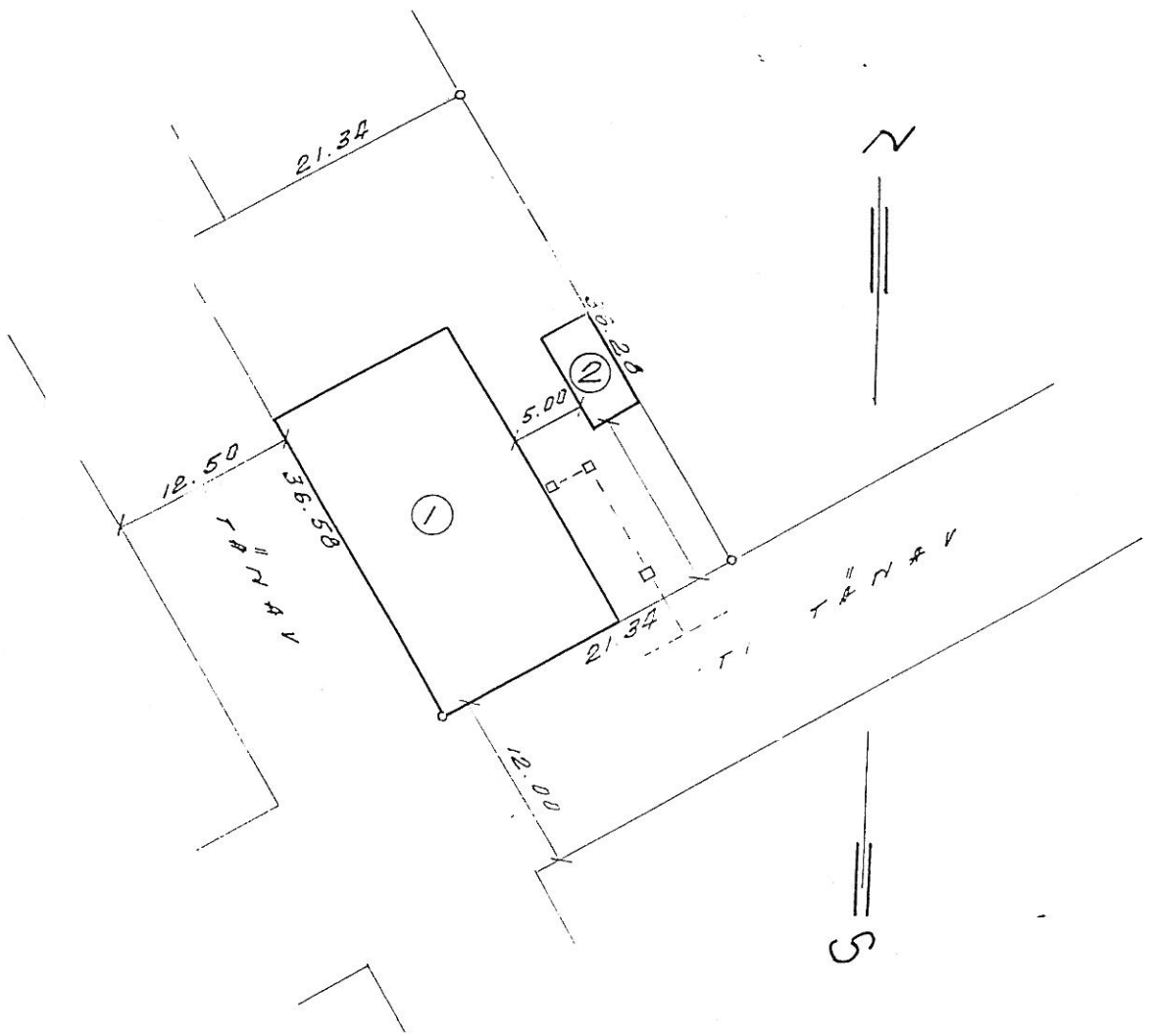
KOOPA ÕIGE

22. 05. 2001

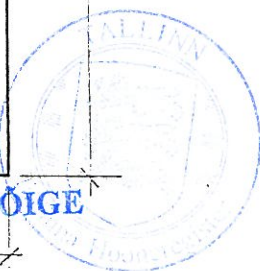
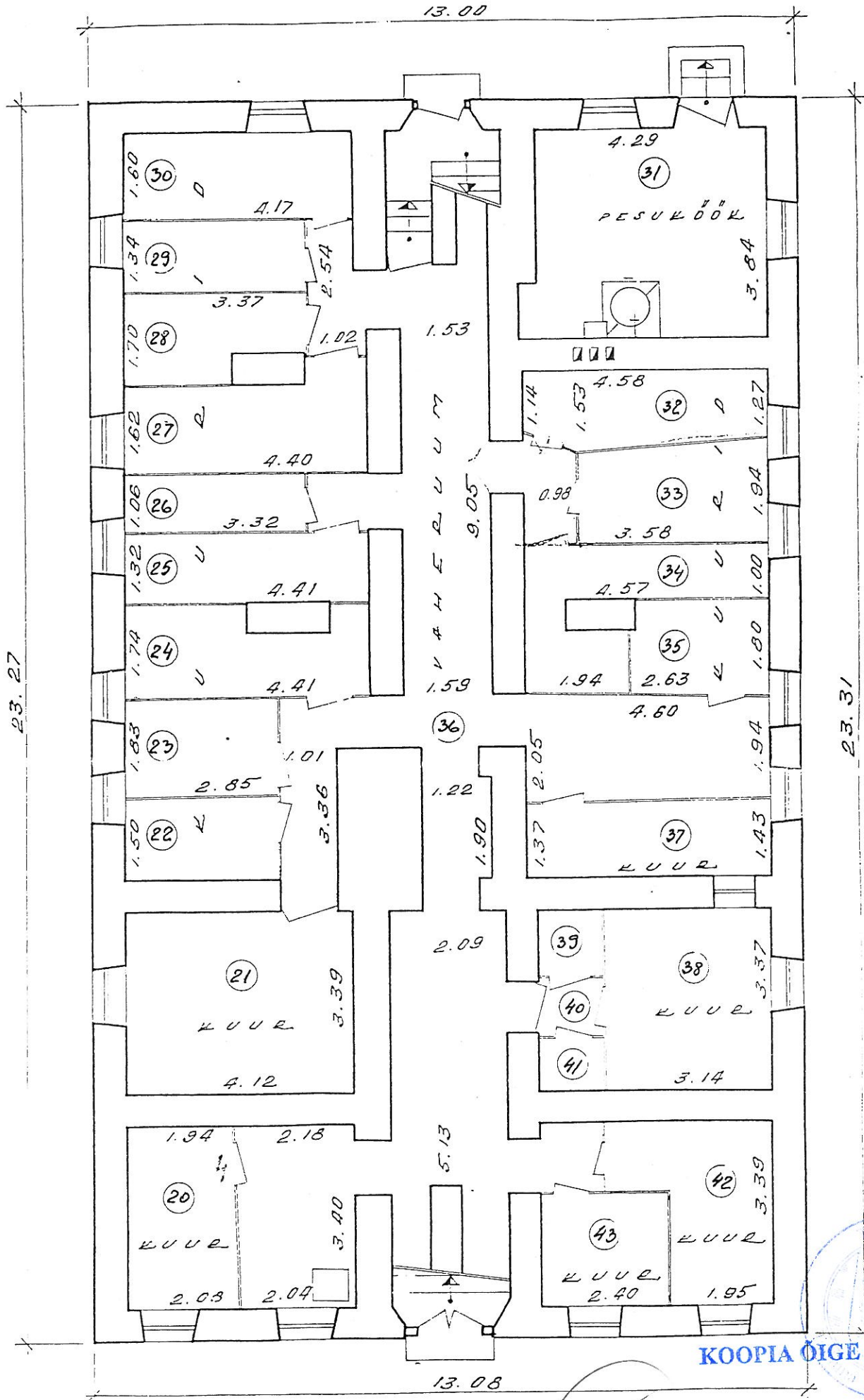
Karmen Kroon
Peaspetsialist

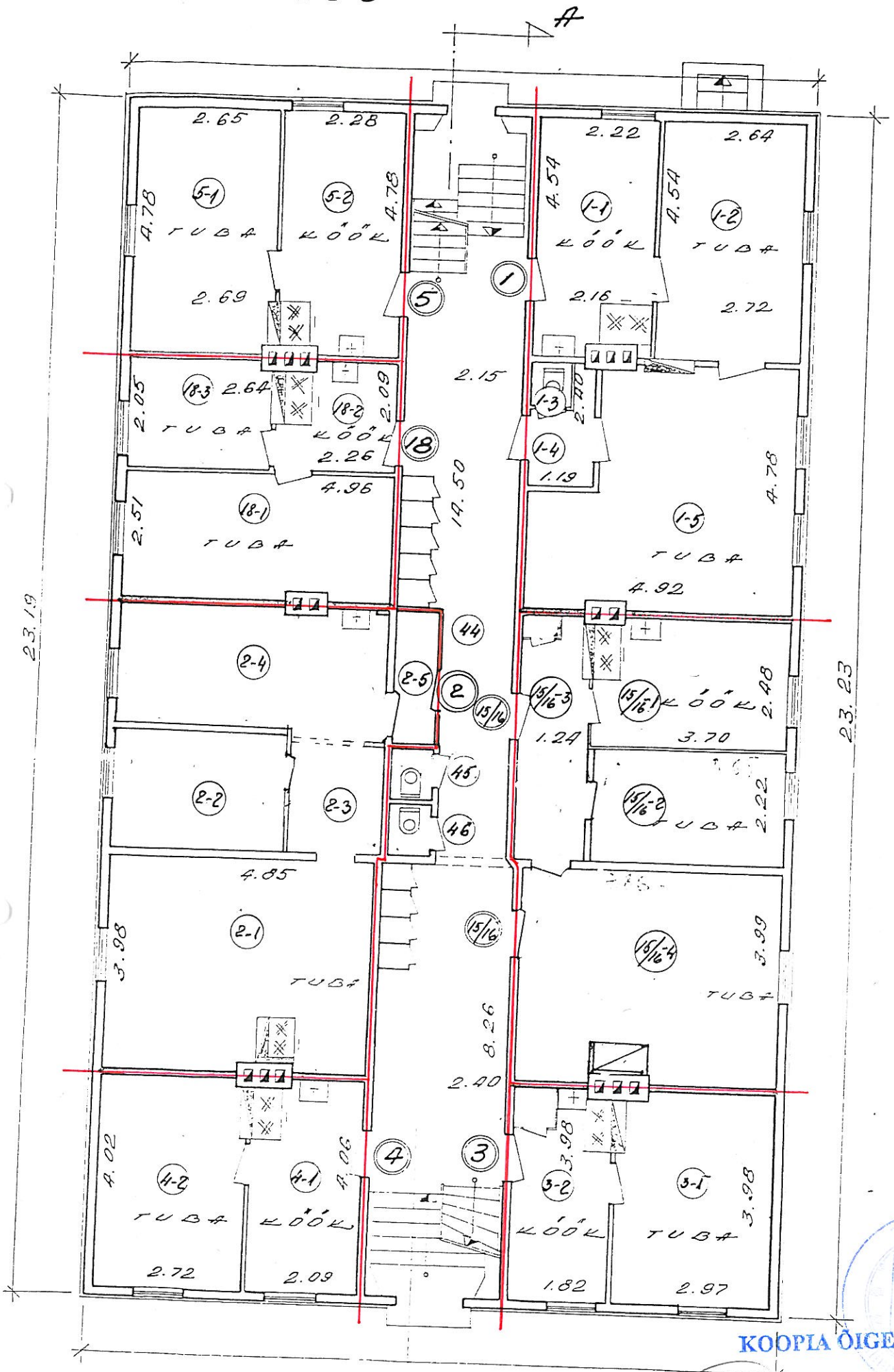


ASENDIPLAAN



1000...
02.06.01



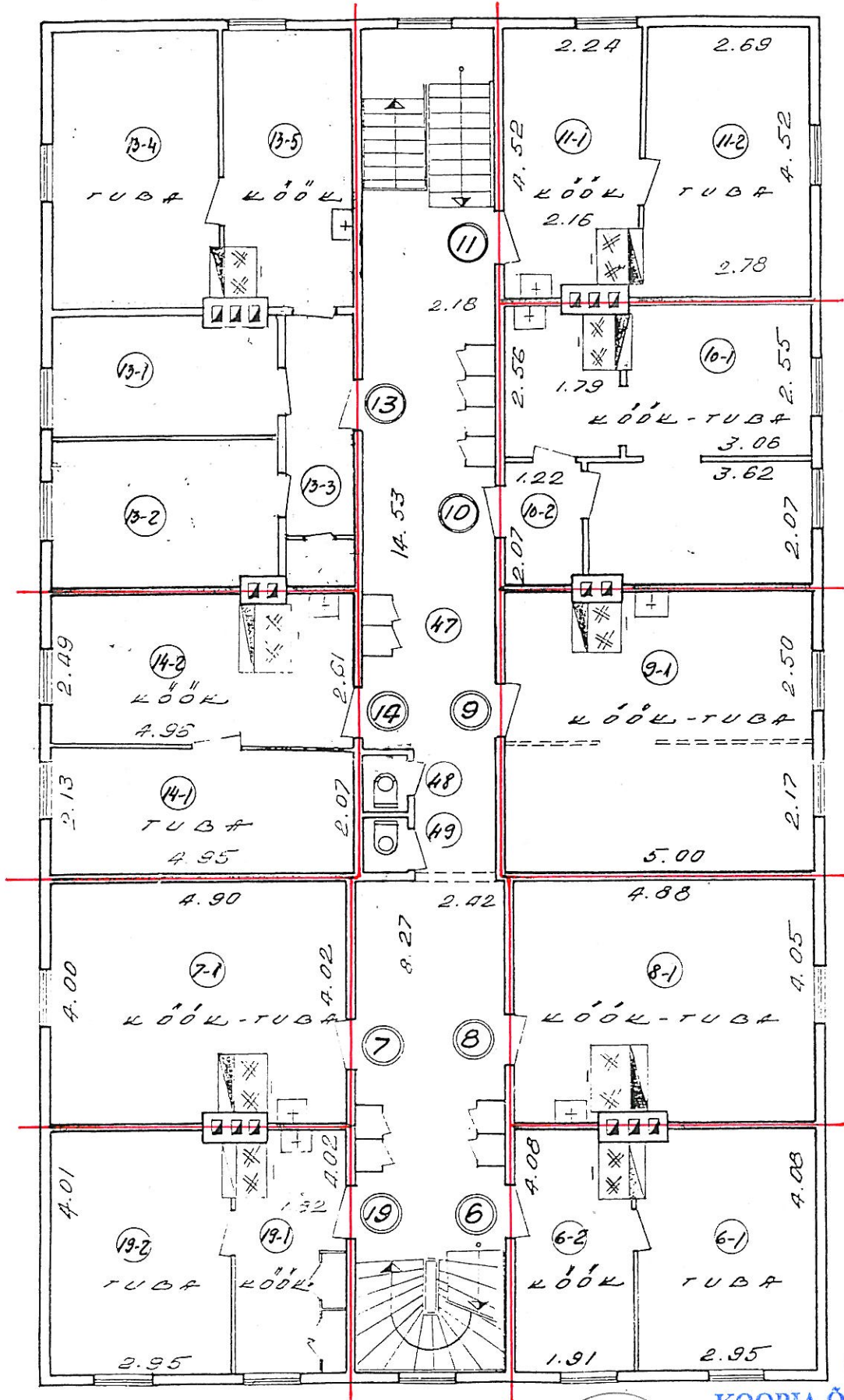


KOOPLA OIGE



Karmen Kroon
Peaspetsialist

22.05.2001



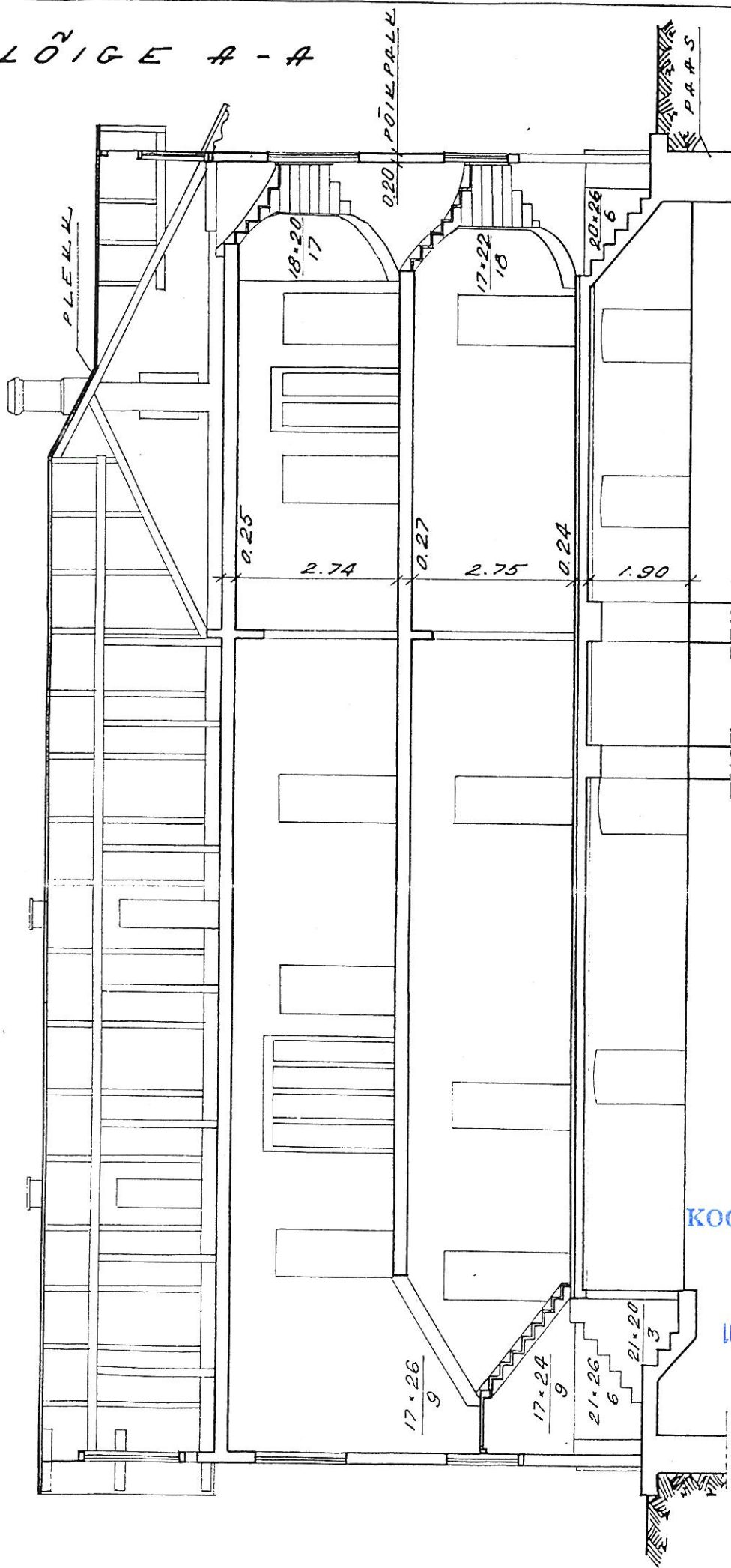
KOOPA ÕIGE



Karmen Kroon
Peaspetsialist

22. 05. 2001

LÕIGE A-A



KOOPIA ÕIGE



22 05 2001

Karmen Kroon
Peaspetsialist

1	2	3	4	5	6	7	8	9	10
227/4099			KORTER NR.9 KOKKU	22.7	22.7				
	47	TREPIKODA	14.53*2.18-2.10*0.79-4.89*0.03+ +1.28*0.16+8.27*2.42-3.94*0.03	50.0				50.0	
	48	WC	0.75*0.98	0.7				0.7	
	49	WC	0.74*1.00	0.7				0.7	
8	8-1	KÖÖK-TUBA	4.88*4.05-1.17*0.87-1.13*0.14	18.6	18.6				
186/4099			KORTER NR.8 KOKKU	18.6	18.6				
6	6-1	TUBA	4.08*2.95-1.14*0.12-0.16*0.38	11.8	11.8				
	6-2	KÖÖK	4.08*1.91-1.28*0.52	7.1		7.1			
189/4099			KORTER NR.6 KOKKU	18.9	11.8	7.1			
			TEINE KORRUS KOKKU	253.3	150.3	51.6		51.4	
			ELAMU KOKKU	716.9	286.9	123.0	127.6	179.4	



KINNITAN INVENTPLAANI

ÕIGSUST

"07" *mai* 200 ¹ a.

Allkiri *Kaasik*

KAUPO KAASIK
Põhja-Tallinna Valitsuse
Erastamise ja varade sektori
spetsialist

KOOPIA ÕIGE

22. 05. 2001

Karmen Kroon
Peaspetsialist

EHITISE EKSPLIKATSIOON

JRK. NR.	NIMETUS	PINNAD M ²						
		Hoone alune pind	Üldpind (Suletud netopind)	Kasulik pind	Eluruumide pind	Elamispind	Maht m ³	Märkus
1	2	3	4	5	6	7	8	9
1	TIMUTI TN.22							
1	ELAMU	301.0	716.9	716.9	409.9	286.9	2458.0	
2	KUUR	25.0					56.0	

OÜ TALLINNA TIB			
PLAANISTAJA	M.MEIEL		23.03.2001
KONTROLLIJA	P.LILL		23 03 2001



KOOPIA ÕIGE

22.05.2001

Karmen Kroon
Peaspetsialist

RUUMIDE EKSPLIKATSIOON

Korteri nr.	Ruumi nr.	Ruumi nimetus	<div style="text-align: center;"> KOOPIA ÕIGE 22.05.2001 Ruumi arvutamise avaldis Karmen Kroon Peaspetsialist </div>	ÜLDPIND(SULETUD NETOPIND m ²)					
				Kokku	Eluruumide pind		Lahuspind	Üldkasutatav pind	Mitteeluruumi pind
					Elamis	Abiruumi			
1	2	3	4	5	6	7	8	9	10
		<u>TIMUTI TN.22</u>							
	20	KUUR	3.40*(1.94+2.08)/2	6.8			6.8		
	21	KUUR	3.39*4.12	14.0			14.0		
	22	KUUR	2.85*1.50	4.3			4.3		
	23	KUUR	2.85*1.83	5.2			5.2		
	24	KUUR	4.41*1.74-1.50*0.50	6.9			6.9		
	25	KUUR	4.41*1.32	5.8			5.8		
	26	KUUR	3.32*1.06	3.5			3.5		
	27	KUUR	4.40*1.62+1.02*0.51	7.6			7.6		
	28	KUUR	3.37*1.70-1.36*0.51	5.0			5.0		
	29	KUUR	3.37*1.34	4.5			4.5		
	30	KUUR	4.17*1.60	6.7			6.7		
	31	PESUKÖÖK	3.84*4.29+0.99*0.30-0.30*0.33- -1.05*1.04	15.6				15.6	
	32	KUUR	3.60*(1.27+1.53)/2+0.98*(1.14+1.53)/ /2	6.3			6.3		
	33	KUUR	3.58*(1.70+1.94)/2	6.5			6.5		
	34	KUUR	4.57*1.00+1.94*1.15+0.55*0.71	7.2			7.2		
	35	KUUR	2.63*1.80	4.7			4.7		
	36	VAHERUUM	9.05*(1.53+1.59)/2+2.54*1.02-0.29* *0.95+1.10*0.60+0.52*0.90+0.98* +(2.07+1.70)/2+4*1.00*0.60+1.01* *0.95+3.36*1.01+4.60*(2.05+1.94)/2+ +2*1.00*0.56+1.22*1.90+5.13*2.09* +0.80*0.90+0.74*0.90+1.00*0.58+ +1.24*1.13+1.00*0.60+3.40*(2.18+ +2.04)/2	60.6				60.6	
	37	KUUR	4.60*(1.37+1.43)/2	6.4			6.4		
	38	KUUR	3.37*3.14	10.6			10.6		
	39	KUUR	1.18*1.21	1.4			1.4		
	40	VAHERUUM	1.18*1.08	1.3				1.3	
	41	KUUR	1.18*0.98	1.2			1.2		
	42	KUUR	3.39*1.95+1.23*1.24	8.1			8.1		
	43	KUUR	2.40*2.06	4.9			4.9		
			KELDRIKORRUS KOKKU	205.1			127.6	77.5	
4	4-1	KÖÖK	4.06*2.09-1.21*0.56-0.84*0.20	7.6		7.6			
	4-2	TUBA	4.02*2.72-1.15*0.12-0.17*0.09	10.8	10.8				
184/4099			KORTER NR.4 KOKKU	18.4	10.8	7.6			
2	2-1	TUBA	(3.93+3.97)/2*4.83-1.00*0.22- -1.00*0.55*0.12*1.10	18.2	18.2				
	2-2	TUBA	(3.02+2.98)/2*2.23	6.7	6.7				
	2-3	VAHERUUM	(1.77+1.80)/2*2.08	3.7		3.7			
	2-4	KÖÖK	1.80*2.56-0.14*0.16-0.20*0.84+ +3.10*2.34+0.02*0.15	11.7		11.7			
	2-5	ESIK	(2.65+0.71)/2*0.76	2.0		2.0			
423/4099			KORTER NR.2 KOKKU	42.3	24.9	17.4			
18	18-1	TUBA	4.96*2.51-0.14*0.83	12.3	12.3				



1	2	3	4	5	6	7	8	9	10
	18-2	KÖÖK	2.26*2.09-1.19*0.67-0.81*0.15	3.8		3.8			
	18-3	TUBA	2.64*2.05-0.20*0.19	5.4	5.4				
215/4099			KORTER NR.18 KOKKU	21.5	17.7	3.8			
5	5-1	TUBA	4.78*(2.65+2.69)/2-0.12*0.97- -0.06*0.09	12.6	12.6				
	5-2	KÖÖK	2.28*4.78-0.68*1.05-0.19*0.18	10.2		10.2			
228/4099			KORTER NR.5 KOKKU	22.8	12.6	10.2			
1	1-1	KÖÖK	4.54*(2.22+2.16)/2-0.93*0.80- -1.24*0.25	8.9		8.9			
	1-2	TUBA	4.54*(2.64+2.72)/2	12.2	12.2				
	1-3	WC	0.74*0.88	0.7		0.7			
	1-4	ESIK	1.19*2.40-0.77*0.90-0.28*0.07	2.1		2.1			
	1-5	TUBA	4.78*4.92-1.30*2.50-0.69*0.08- -0.92*0.10	20.1	20.1				
440/4099			KORTER NR.1 KOKKU	44.0	32.3	11.7			
15/16	15/16-1	KÖÖK	3.70*2.48-1.21*0.51-0.53*0.15	8.5		8.5	22.05.2001		
	15/16-2	TUBA	3.65*2.22	8.1	8.1				
	15/16-3	ESIK	1.24*4.79-0.16*1.20-1.05*0.03	5.7		5.7			
	15/16-4	TUBA	3.99*4.86-1.16*0.71	18.6	18.6				
409/4099			KORTER NR.15/16 KOKKU	40.9	26.7	14.2			
	44	TREPIKODA	14.50*2.15-2.35*0.85-3.58*0.03+ +8.26*2.40-4.07*0.03+0.16*(2.30+ +2.40)/2	49.1				49.1	
	45	WC	0.74*0.98	0.7				0.7	
	46	WC	0.74*1.00	0.7				0.7	
3	3-1	TUBA	3.98*2.97-1.22*0.15-0.40*0.19	11.6	11.6				
	3-2	KÖÖK	3.98*1.82-1.22*0.51-0.55*0.20	6.5		6.5			
181/4099			KORTER NR.3 KOKKU	18.1	11.6	6.5			
			ESIMENE KORRUS KOKKU	258.5	136.6	71.4		50.5	
19	19-1	KÖÖK	4.02*1.82-2.87*0.03-1.06*0.49- -0.52*0.16	6.6		6.6			
	19-2	TUBA	4.01*2.95-1.12*0.17-0.67*0.16	11.6	11.6				
182/4099			KORTER NR.19 KOKKU	18.2	11.6	6.6			
7	7-1	KÖÖK-TUBA	(4.02+4.00)/2*4.90-1.05*0.16- -0.85*1.05	18.6	18.6				
186/4099			KORTER NR.7 KOKKU	18.6	18.6				
14	14-1	TUBA	4.95*(2.07+2.13)/2	10.4	10.4				
	14-2	KÖÖK	4.96*(2.49+2.61)/2-1.17*0.89- -0.70*0.22	11.5		11.5			
219/4099			KORTER NR.14 KOKKU	21.9	10.4	11.5			
13	13-1	TUBA	1.93*3.40-0.13*1.06	6.4	6.4				
	13-2	TUBA	2.41*3.45-1.00*0.13	8.2	8.2				
	13-3	ESIK	1.14*4.45-1.14*0.04	5.0		5.0			
	13-4	TUBA	2.35*4.43-1.04*0.13-0.14*0.12	10.2	10.2				
	13-5	KÖÖK	1.95*4.64-1.10*0.51-0.18*0.20	9.7		9.7			
395/4099			KORTER NR.13 KOKKU	39.5	24.8	14.7			
11	11-1	KÖÖK	4.52*2.24-1.22*0.26-0.89*0.64	9.2		9.2			
	11-2	TUBA	4.52*(2.69+2.78)/2+0.22*0.23	12.4	12.4				
216/4099			KORTER NR.11 KOKKU	21.6	12.4	9.2			
10	10-1	KÖÖK-TUBA	2.55*3.06-1.01*0.06+0.10*1.00+ +2.56*1.79-0.95*0.58+0.96*0.10+ +3.62*2.07-0.48*0.14	19.4	19.4				
	10-2	ESIK	2.07*1.22-0.17*0.14	2.5		2.5			
219/4099			KORTER NR.10 KOKKU	21.9	19.4	2.5			
9	9-1	KÖÖK-TUBA	5.00*(2.17+2.50)+0.70*0.07- -0.74*1.01	22.7	22.7				

KOOPIA ÕIGE

Karmen Kroon
Peaspetsialist